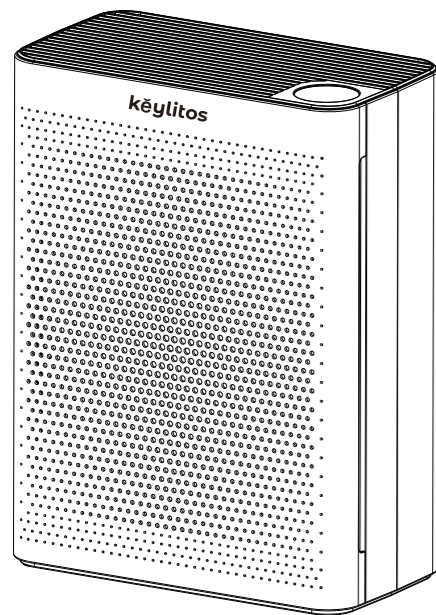


kēylitos Air Purifier

Instruction Manual

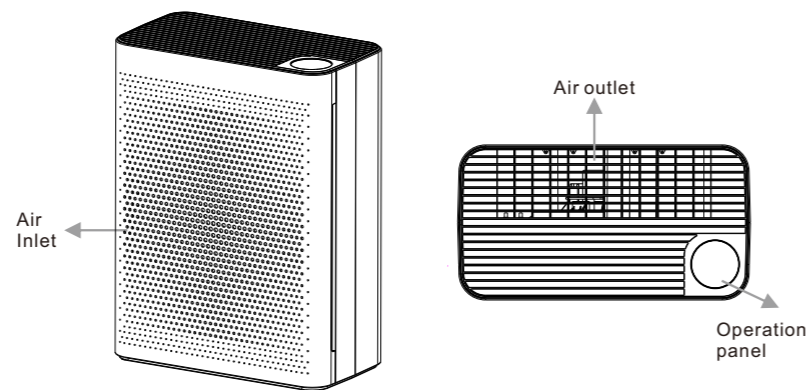


Please read this manual carefully before use.

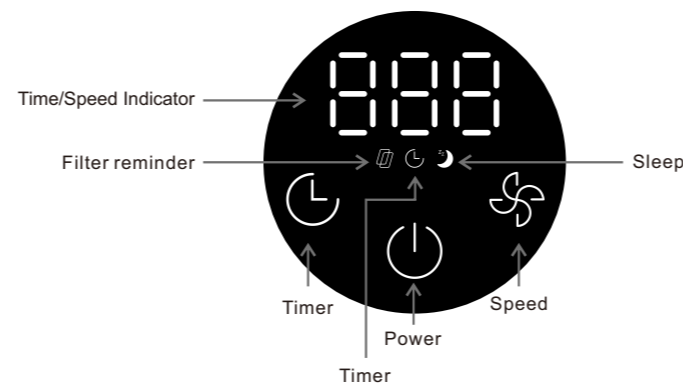
PERFORMANCE

Product Name	Air Purifier
Rated Voltage	110V-120V~
Rated Frequency	50Hz/60Hz
Product Usage	Removes pollutants such as particulate matter, gas pollutants and microorganisms in the air.
Method of Cleaning	Hepa+Carbon Filter
Rated Power	65W
Energy Efficiency Index	Qualified (Particulates)
Noise	57dB(A)
Coverage	It covers up to 1324 ft ² / 123 m ² in 1 hour, 993 ft ² /92 m ² fast purification in 45 minutes, 662 ft ² / 61m ² in 30 minutes.
Product size	330x175x433mm
Weight	4.4Kg

PRODUCT STRUCTURE



1

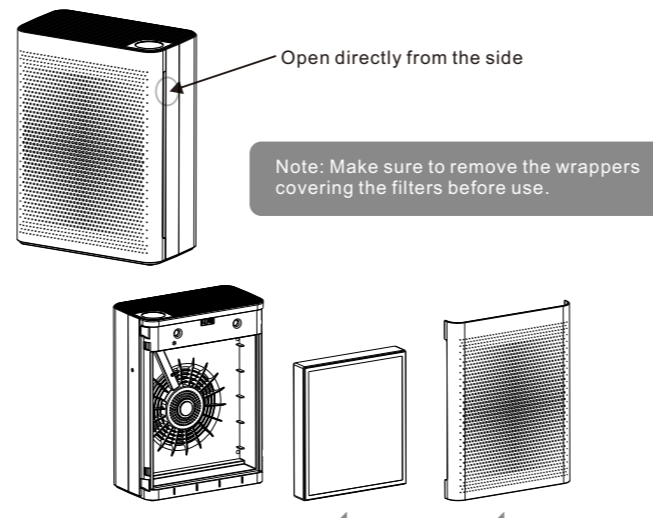


INSTALLATION

◆ Install filter

Note: Before using your new air purifier you must remove the wrappers covering the filters.

1. Remove the air inlet.
2. Remove the filter.
3. Remove the wrappers covering the filters.
4. Install the filter to the air purifier.



Note: There are internal and external points, the one with the pull tab facing out; be sure to install the front panel before use.

2

HOW TO USE

1. After the machine is powered on, the buzzer will make a single beep, the display screen will be on for 1 second, and then it will enter the standby state.

2.Power

After power on, the power indicate lights up in white, and the machine enters the speed 1 (low mode).

3.Timer

When the machine is running, the working time of the machine can be set by the timer button. Set the time from 1 to 8 hours, the timing can be canceled by pressing and holding this button for 2 seconds.

4.Speed

Pressing the wind speed button can change the motor speed, which is divided into speed 1 (low mode), speed 2 (medium mode), speed 3 (high mode) and sleep mode.

5.Sleep

Press the wind speed button until the sleep icon (moon) turns on. All other icons will be off (except the sleep icon) after the wind speed enters the sleep mode for 5 seconds. Touch the screen to wake up the operation interface to light up.

6.Filter Reminder

This machine is equipped with a function of prompting the replacement of the filter with a cumulative timing of power-on. When the filter reminder icon lights up, it means that you need to replace the filter replacement. After changed the new filter, please let the air purifier in the non-timed state, press and hold the timer button, and the filter will restart timing.

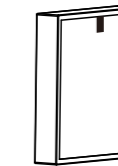
7.Power off

Just click the "power" button to turn off the device when the air purifier in the 1/2/3 modes. If the device is in the sleep state, touch the "power" button, the machine enters the standby state (All icons lights on when the machine enters the standby state) Then click the "power" button again to turn off the device.

3

FILTER MAINTENANCE

※Hepa+Carbon Filter (Replace the filter every two months)



This machine is equipped with a function of prompting the replacement of the filter with a cumulative timing of power-on. The setting time is 1,500 hours. When the machine is turned on and runs for 1500 hours, the filter replacement icon will light up. At this time, when the timing function is not turned on, pressing the timer button for a long time then the filter will restart timing.

- Place the filter in a ventilated place so that the harmful gases and bacteria on the surface of the filter can be volatilized.
- Do not expose it to excessive sunlight.
- Do not wash the filter with water.

※Tips

- Unplug the power plug before cleaning and maintenance;
- Do not operate the air purifier without the filter (the air purifier can't refresh the air if without the filter) and the inhaled the dust may cause equipment failure;
- Unplug the power cord when it is idle for a long time (it will also consume power in the standby state);
- Depending on the place of use and the method of use (for example, households with a large number of smokers or areas with severe air pollution), the filter replacement cycle may be shortened. If the filtration effect is not obvious, replace the filter in time.
- When replacing the filter, please turn off the air purifier first.

CLEANING AND STORAGE

We recommend that you clean the air purifier at least once every 3 months and before extended storage.

Use only a dry cloth to wipe the external surfaces of the air purifier.

DO NOT USE WATER, WAX POLISH, OR ANY CHEMICAL SOLUTION.

If your Air Purifier will not be used for more than 30 days, we recommend that you:

- Unplug the power cord when it is idle for a long time
- Remove the Filters from the air purifier.
- Wrap the Filters in an air tight plastic bag.

4

PRECAUTIONS

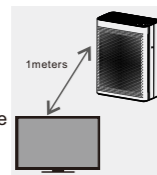
1. Do not place the air purifier in the following places:

- Places with direct sunlight.
- Facing the air outlet.
- Heat-prone places.



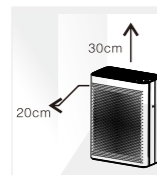
(The above three situations may cause deformation, deterioration, discoloration, and no function).

- Please place it more than 1 meter away from RF communications equipment, such as TVs and radios (which may cause image distortion and noise).



Moreover, if these devices use the same socket at the same time, image jam and noise may occur when the power plug is inserted. When this situation happens, plug the power cord into the different sockets.

2. For indoor dust such as pollen, the product should be placed on the ground. Since pollen, dust, etc. are likely to fall near the floor, it is recommended to place the product on a flat floor in the room.



3. In order to effectively circulate the air in the room.

In order not to block the air inlet and outlet, place the product about 30cm or more from the left and right sides of the wall, furniture, curtains, etc. In order to use this product more effectively, please keep the back of the product at least 20cm away from the wall.



4. Do not place objects on the main unit (otherwise it may cause the machine to malfunction). Special Note: Do not place magnets and metal objects.

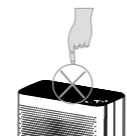
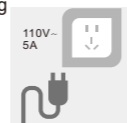
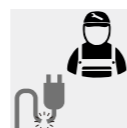


5. Do not block the air inlet and outlet, for example, do not place objects on the air outlet. Or in front of the air inlet.

WARNING

PROHIBITED

- The machine is prohibited from moving or shaking while it is running. Do not pull on the power cord while moving or storing it. Pulling the power cord may cause a short circuit or damage to the inside of the power cord, resulting in fire or electric shock.
- Do not damage the power cord or plug, and do not cut, excessively twist, pull, or twist the power cord. If the power cord is damaged, it must be replaced by the manufacturer, service department or professional to avoid danger. Non-professionals are prohibited from disassembling the machine to avoid the risk of electric shock.
- The plug and hand should not be exposed to water before plugging in the power plug, otherwise there is a danger of electric shock.
- Do not use power supplies, universal sockets or connected devices that exceed the rated value. 110V ~ 5A AC power. Using a universal outlet that exceeds the rated value or connecting the power supply may cause the power cord to overheat and cause a fire.
- Do not touch the power plug with wet hands, which may result in electric shock.
- Do not put your fingers or metal objects into the gap of the air outlet, otherwise it may cause electric shock or injury. Do not allow water, flammable detergents or other liquids to enter the product to avoid electric shock or fire.
- This product is not a substitute for normal ventilation equipment, daily vacuum cleaners and range hoods used in the kitchen.
- Do not use this product in gas appliances, heating devices or stove accessories.
- Do not use this product in a wet or hot environment such as a bathroom, toilet or kitchen.
- Never place products in such locations.
 - Unstable locations (otherwise the product may fall or fall over, resulting in injury, electric leakage, electric shock or fire.)
 - Locations that are hot, humid, or wet, such as bathrooms (air purifiers may cause electric shock or fire due to electric leakage.)
 - A place where the kitchen emits soot.
- Do not use air purifiers in indoors with incense-based insecticides
 - Chemical residues may accumulate in the machine and then be released from the air outlet to endanger your health.
 - After using the insecticide, allow the room to be thoroughly ventilated before using the air purifier.



12. It is not recommended to use an air purifier when burning incense or mosquito coils, otherwise the filter of the air purifier will leave an odor.



MANDATORY MATTERS

- Turn off the power of the machine immediately when any of the following conditions occur (may cause electric shock, sparks or smoke)
 - There is abnormal sound or vibration during operation.
 - The product is abnormally hot and has a burnt odor.
- Please clean the power plug regularly
 - If the power plug is dusty, moisture may damage the insulated part of the plug, resulting in a fire.
 - If the appliance is not used for a long time, please unplug the power cord.
- Be sure to disconnect the power before performing maintenance on the appliance. The product may suddenly start, causing electric shock and injury.
- Plug the plug securely into the power outlet (if the plug is not securely inserted, it may cause electric shock due to overheating or even cause a fire.)
 - Do not use a damaged plug or a loose power outlet.
- Please pull the power plug from the insulated part of the hand-held plug.
 - Pull the power cord to pull off the power plug, which may cause damage to the power cord, electric shock, short circuit, or fire.
- When any of the following conditions occur, please turn off the power of the machine immediately and look for the maintenance department.
 - The switch does not work.
 - The power cord or plug is abnormally hot.
 - I noticed an abnormal sound or vibration.
 - There are any other abnormalities or malfunctions.
- Non-professionals are prohibited from disassembling the machine to avoid the risk of electric shock.



TROUBLESHOOTING

Fault phenomenon	Inspection / solution
Can't turn on or press button no response	1. Is the power cord plug plugged in? → Plug in the power cord. 2. Is the front cover of the purifier covered? → Cover the front cover of the purifier.
The smell of the air outlet makes people feel uncomfortable	Is the filter not replaced for a long time? → Replace the filter with a new one.
The purifier runs for a long time but the air quality is not significantly improved	1. Is the plastic bag on the filter screen removed by the purifier? → Remove the plastic bag from the filter before using it for the first time. 2. Is the order of the purifier filter incorrectly installed? → Please refer to the instructions for the installation sequence and precautions.
The air purifier is starting to make noise even in sleep mode.	The filters may be dirty. Replace the Filters.
Filter alarm light is on	It indicates that the filter timing change timer has reached the set value. At this time, after changing the filter replacement, press and hold the time button to reset.

WARRANTY AND SERVICE

◆ LIMITED FIVE-YEAR WARRANTY

This warranty is available to consumers only. You are a consumer if you own the Keylitos air purifier that was retail purchased for non-commercial use. This warranty is not available to retailers or other commercial purchasers or owners.

Please contact us via email : support@keylitos.com to register your warranty to receive premium benefits! By registering your product, you will receive 5 years warranty, expedited customer support, hassle-free returns and helpful product tips.

Any questions about the product, contact us via email : support@keylitos.com. We are always here, ready to help you.

Please click the following link to download the E-User Manual.

<https://www.keylitos.com/downloads>

◆ FCC COMPLIANCE

This device complies with Part 15 of the FCC Rules. Operation is subject to the following two conditions:

- (1) This device may not cause harmful interference, and
- (2) This device must accept any interference received, including interference that may cause undesired operation.

MADE IN CHINA